

THERMOFLEX Series

Mobile Glass Walls

Particularly suitable for home conservatories and restaurants!
The special closing mechanics (registered design no. 20 2006 009 867.4) make the mobile wall stable, wind and rain proof and provide protection against intruders.

The filigree profile and the only mobile glass wall without floor sections, i.e. without "trip hazards", are just some of the advantages of THERMOFLEX.



The façade of a music room closed with Thermoflex. Lamellar windows are integrated for ventilation.



The mobile Thermoflex elements are detached, manoeuvred over the 90° corner and positioned outside of the wall pivot.



When the wall is opened, the music room becomes a "stage".

Aquatoll Leisure Pool in Neckarsulm
Closed external view



The Aquatoll Leisure Pool in Neckarsulm (children's pool).
Barrier-free access, curved wall segments.

THERMOFLEX Series

Mobile Glass Walls

No ground sills with the 30mm ISO glazing and 82mm thick ISO profile!
Element widths up to approx. 1500 mm, element height up to approx. 5000 mm, Integrated doors, windows and ventilations etc are possible.

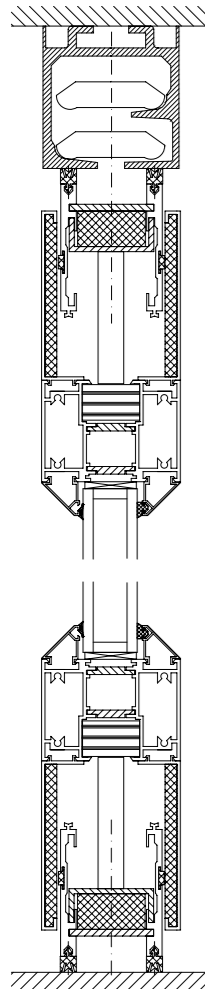
THERMOFLEX can also be supplied with sealing ledge electronics.



Innovations in motion

Technical Data

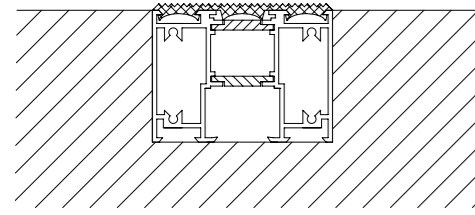
THERMOFLEX Mobile Glass Walls



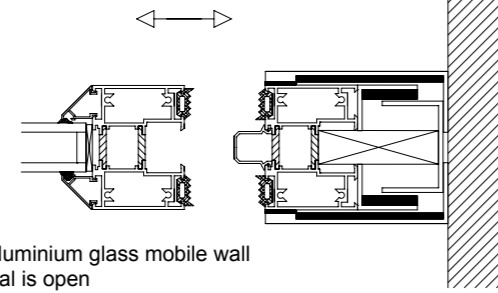
Advantages of the system:

- Single elements and therefore lots of positioning options
 - Closure with special drives between floor and rails
 - Upper aluminium rails
 - No ground sills or ground rails and therefore no trip hazards
 - Relief of pressure on the building ceiling when closed
 - Thermally insulated profiles
 - Profile with an installation depth of 82 mm
 - Good stability
 - Wind, rain and soundproof
 - Unlimited wall length
 - Telescopic correction terminal for absorbing temperature fluctuations
 - Large element width of approx. 1200 mm
 - Extremely high elements with approx. 5000 mm
 - Glass thickness up to 60 mm is possible
 - Glass ledges are tapered and there are no deposits of dirt – filigree design
 - Soundproofing test certificate for 42 dB
- Alternative version:
- Doors, windows and tilting panes to match the system
 - Safety bolts in the sealing ledges for protection against intruders
 - Type 82/B with horizontal brush seals

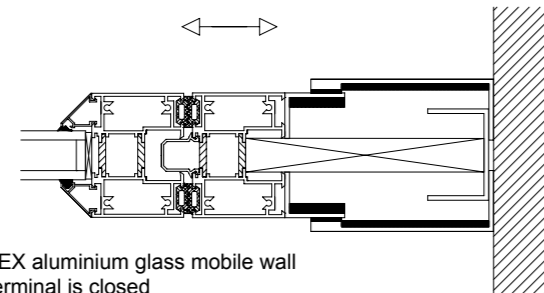
THERMOFLEX mobile glass wall
Section element with rail



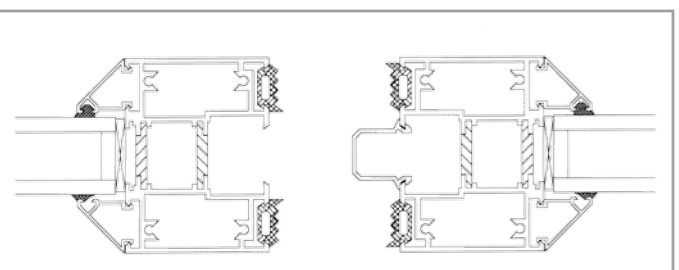
Cross-section of a THERMOFLEX
floor partition profile



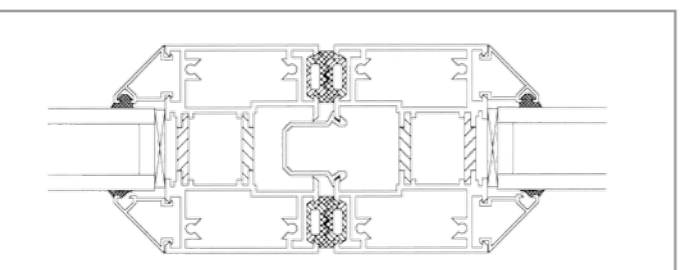
THERMOFLEX aluminium glass mobile wall
Telescopic terminal is open



THERMOFLEX aluminium glass mobile wall
Telescopic terminal is closed

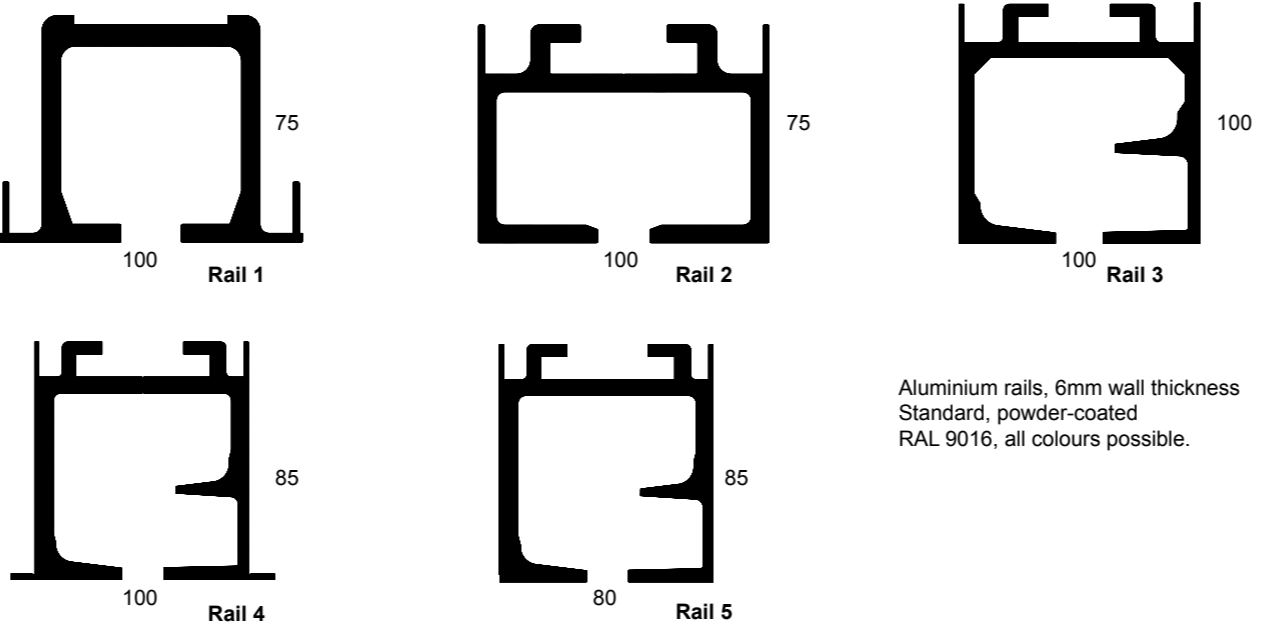


THERMOFLEX element connection (element is open)



THERMOFLEX element connection (element is closed)

Rail systems



Aluminium rails, 6mm wall thickness
Standard, powder-coated
RAL 9016, all colours possible.

Positioning options

- 1 The individual wall elements are hung with a single point mounting which is centrally positioned
- 2 Two point segmentation; elements are offset to the side
- 3 Two point mounting
- 4 Positioned in the recess – two point mounting
- 5 Two point mounting positioned in the recess. Lock-up doors are possible
- 6 Two point segmentation for flat areas
- 7 Two point segmentation; elements are manoeuvred on the axis

These are just a few examples!
Our rails and the matched roller trolleys enable a variety of element connections to suit the situation in the building.
We can supply you with technical data sheets and drawings for each element connection in relation to your building!

Other program products:



DESIGN 2000 Mobile Partition Walls

Soundproofing mobile individual elements which can be manoeuvred in the ceiling rails!
Aluminium system construction with 16 and 19 mm ceiling plates with various surfaces.
Wall thickness of 100 mm. No floor rails!
Sealing ledges can be manoeuvred manually and electrically.
Soundproofing up to 55 dB.
Can be combined with: Double glazed Glazing type elements.
Sealed manually or with DE (sealing ledge electronics).



TRANSFLEX

Transparent and flexible!

Full glass sliding systems with filigree frame construction. Large glass surfaces provide lots of transparency. Developed rail systems guarantee simple operation of the elements.
Ideal for shopping centres, hotels, restaurants, banks etc.
Also suitable for balcony glazing.
Systems can be supplied as: mobile walls, folding walls, sliding partitions



GLAZING

Clearly separated

Double glazed mobile walls for interiors; compatible with all of the DESIGN 2000 series models. Operated manually or with DE (sealing ledge electronics). Inlaying aluminium frames; vertical 30mm and horizontal 135 mm (standard).

Our motto: make changes to rooms with ideas and technology!
We can also offer "mobile solutions" for your building.
Allow us to provide you with advice in the planning stages and trust in our 35 years of experience in mobile walls!

Request information!



D-74182 Obersulm · Dimbacher Straße 16
phone: 07134-910180 · fax: 07134-910181
www.renoplan-mobilwaende.de
info@renoplan-mobilwaende.de

Sales · Installation · Service

